



A'DIVA SE AND STRADA 2 IN STAINLESS STEEL



ALWAYS THINKING DIFFERENTLY

Gallo Acoustics don't make ordinary loudspeakers.

We set-aside the conventional and design beautifully different speaker products, each conceived to conform with the philosophy that acoustic performance is paramount, and should never be compromised by stylistic considerations.

We don't build boxy rectangular speakers either, preferring to design our creations around spheres - thus eliminating resonance and external diffraction, the two main causes of loudspeaker distortion.

Quite simply - Gallo Acoustics produce the world's finest 'small' speaker systems, each designed to complement your interior design needs and to bring exceptional, expansive sound to living spaces large and small.

MICRO

THE ORIGINAL SMALL DESIGNER SPEAKER

There are numerous loudspeakers capable of producing fine sound, unfortunately most are too large, unattractive or power hungry to operate in many modern living spaces. That's what makes the Micro different: a 4" diameter, all-metal sphere, available in a wide range of colours and finishes.

The Micro produces a vast soundstage and pinpoint imaging, in a beautifully small, visually attractive package. Hi-Fi, Home Cinema or Multi-Room; with the Micro the choice is yours. Add the powerful TR-3D subwoofer and an array of mounting options, and it's easy to configure a Micro system to fit your home and audio aspirations.



Anthony Gallo designed his first loudspeaker at the age of fourteen. His first commercially available product - the Nucleus Reference speaker (above), went on sale in 1994. Today, Gallo Acoustics loudspeakers are sold in over 30 countries worldwide.



MICRO STAINLESS STEEL ON FLOORSTAND

MICRO

Imagine a true high-end loudspeaker that fits in the palm of your hand.
A speaker that comes in a palette of colours to complement any room,
from simple matt black to striking polished stainless steel.

The Micro is flexible too, with a choice of four mounting options available.
A Micro can be positioned just about anywhere, on a wall with the Micro
Wall Bracket, on any flat surface using the 'Isolation Ring' supplied, ceiling
mounted using the In-Ceiling Mounting kit, or on elegant floor stands,
available in black, white or stainless steel finishes.



By choosing a sphere, the strongest possible shape, we have eliminated internal resonance and external diffraction, the two main causes of loudspeaker distortion. Our patented S2 technology enhances low frequencies that go way beyond conventional satellite speakers.

By using 3" full-range drivers and eliminating any crossovers, the Micro is endowed with spatial characteristics unsurpassed by any other loudspeaker, regardless of size or price.

SPECIFICATION

Frequency Response (on-wall or floorstand)	100 Hz to 18 kHz
Frequency Response (isolation ring)	120 Hz to 18 kHz
Sensitivity	85 dB/w 2.8v (1M)
Nominal Impedance	8 Ohms
Power Handling	100 Watts
Driver	3" full range
Cone Material	Mical Polypropylene Compound
Enclosure Material	Mild Steel/Stainless Steel
Dimensions	4" Sphere
Height on Wallstand	91.5 cm
Weight	795g
Warranty	5 years parts and labour

MICRO SE



At the heart of the Micro SE beats Gallo's new high performance, ultra-wide dispersion flat-diaphragm transducer.

The Micro SE takes the great looks and flexibility of the original Micro design, and pairs it with proprietary flat panel driver technology to create what is effectively a 'Super-Micro', perfect for applications where performance really matters.

The Micro SE utilises a specially developed ultra-wide dispersion flat-diaphragm transducer that covers a frequency range from 100Hz to 22Khz, all powered by a single driver. This technology enables the Micro SE to perform as a true audiophile loudspeaker, without large enclosures or a hefty price tag. And because we use a single driver, the Micro SE has no need for a crossover (which always hurts the sound). Our Optimized Pulse Technology (OPT) and patented S2 damping control pods eliminate all ear-fatiguing colourations, enclosure resonances and distortions.

Enclosed in our world-renowned spherical enclosure, the result is a compact satellite speaker that sounds incredible, with a vivid, crystal-clear 3D sound stage that remains stable regardless of your listening position.



MICRO SE

MICRO SE STAINLESS STEEL ON FLOORSTAND

MICRO SE

Just like our standard Micro model, the Micro SE benefits from a pure spherical design, our patented S2 technology and full-range driver architecture - meaning enhanced low frequencies and unsurpassed spatial characteristics.

SPECIFICATION

Frequency Response (on-wall or floorstand)	100 Hz to 22 kHz
Frequency Response (isolation ring)	120 Hz to 22 kHz)
Sensitivity	85 dB/w 2.83v (1M)
Nominal Impedance	4 Ohms
Power Handling (full range)	125 Watts
Power Handling (crossover)	None
Driver	3" wide-dispersion flat diaphragm
Crossover	None
Cone Material	Aluminium Honeycomb Sandwich
Enclosure Material	Mild Steel/Stainless Steel
Dimensions	4" Sphere
Height on Floorstand	91.5 cm
Weight	737g
Warranty	5 years parts and labour



MICRO SE STAINLESS STEEL, MATT WHITE AND SATIN BLACK

A'DIVA STAINLESS STEEL



A'DIVA

We created the A'Diva by taking the key ingredients of our classic Micro design and marrying them to a larger enclosure, in doing so we have developed a loudspeaker that has performance characteristics that defy its modest physical dimensions.

Just an inch larger than the Micro, the A'Diva frees an extra half octave of bass, which means it can be used without the confines of an additional subwoofer. So if the size or the styling of the room rule out a dedicated bass box, A'Diva is the speaker for you.

When it comes to placing A'Diva in your room, it's your choice. Thanks to its low distortion and incredibly coherent sound, the highly adaptable A'Diva can be used in just about any application including two channel stereo, home cinema, multi-media, multi-room and custom install. It can also be mounted practically anywhere, in cabinets or on book shelves for example, without exciting bass resonance problems.

A'DIVA

With our specially designed wall bracket or supplied 'Isolation Ring', the A'Diva can be mounted to a wall or tucked into a bookcase without compromising sound quality.

A'Diva shares a version of our acclaimed 3" drive unit (as used in our Micro model) and can be mixed and matched with other Gallo speakers in a home cinema set-up. The A'Diva for example, makes a perfect centre channel speaker in a Micro 5.1 or 7.1 system.

A'Diva benefits from the same patented technologies and physical advantages as the award winning Gallo Acoustics Micro. By using a spherical enclosure we have eliminated internal resonance and external diffraction, the two main causes of loudspeaker distortion. In addition, by having no crossover, A'Diva is endowed with unparalleled spatial characteristics

A'Diva is an easy-to-drive 8 Ohm design of moderately high efficiency, with power handling specified at 50 Watts full range and 100 Watts when used as a small speaker in home cinema applications.

SPECIFICATION

Frequency Response (on-wall)	80 Hz to 18 kHz
Frequency Response (isolation ring)	100 Hz to 18 kHz
Sensitivity	88 dB/w 2.8v (1M)
Nominal Impedance	8 Ohms
Power Handling (full range)	50 Watts
Power Handling (crossover)	100 Watts
Driver	3" full range
Crossover	None
Cone Material	Mical Polypropylene Compound
Enclosure Material	Mild Steel/Stainless Steel
Dimensions	5" Sphere
Weight	1.6kg
Warranty	5 years parts and labour

A'DIVA SE STAINLESS STEEL



A'DIVA SE

Designed for the music and movie lover who wants the ultimate in compact loudspeaker performance, the A'Diva SE is the no-compromise 'performance' version of our standard A'Diva model.

The A'Diva SE features a proprietary ultra-wide dispersion flat-diaphragm transducer capable of covering a frequency range from 80Hz to 22kHz, and the addition of our Optimised Pulse Technology (OPT) and patented S2 damping control pods guarantee the elimination of ear-fatiguing colourations such as enclosure resonance and distortion.

Just like the standard A'Diva, the A'Diva SE has the ability to go low enough to be used without a dedicated subwoofer, and can be used in a range of configurations depending on the design of your room.

A'Diva SE is available in a choice of Satin Black, Matt White or Stainless Steel finishes.

A'DIVA SE

A'Diva SE benefits from the same patented technologies and physical advantages as the award winning Gallo Acoustics Micro. By using a spherical enclosure we have eliminated internal resonance and external diffraction, the two main causes of loudspeaker distortion.

In addition, by having no crossover, the A'Diva SE is endowed with unparalleled spatial characteristics.

A'Diva SE is a 4 Ohm design with full range power handling specified at 60 Watts and 125 Watts when used in a home cinema situation.

SPECIFICATION

Frequency Response (on-wall)	80 Hz to 22 kHz
Frequency Response (isolation ring)	100 Hz to 22 kHz
Sensitivity	88 dB/w 2.8v (1M)
Nominal Impedance	4 Ohms
Power Handling (full range)	60 Watts
Power Handling (crossover)	125 Watts
Driver	3" wide-dispersion flat diaphragm
Crossover	None
Cone Material	Aluminium Honeycomb Sandwich
Enclosure Material	Mild Steel/Stainless Steel
Dimensions	5" Sphere
Weight	963g
Warranty	5 years parts and labour



A'DIVA SE STAINLESS STEEL, MATT WHITE AND SATIN BLACK



STRADA 2, BLACK AND STAINLESS STEEL

STRADA 2

Strada 2 is the latest incarnation of our acclaimed Strada loudspeaker. Impressive power handling, 90dB sensitivity, 68Hz-20Khz frequency response and textbook perfect dispersion enable Strada 2 to shine in any room, and with any system.

Our most ambitious project to date, Strada redefined the term “price to performance ratio”, and performed at a level which, for their size category, was simply unheard of. Strada 2 raises the bar yet again.

After reviewing the latest data on psychoacoustics, we developed our Optimised Pulse Technology (OPT) System, which transcends the current boundaries of loudspeaker performance and invokes the same visceral impact we experience at live sound venues. The implementation of the OPT System also required us to re-engineer our critically acclaimed Cylindrical Diaphragm Transducer (CDT™) and hence the CDT 3 tweeter was born. Enhanced with the OPT System, Strada 2 blurs the line between recorded sound and live performance, whether resting on a shelf or fixed directly to a wall, they produce the most expansive and full-bodied soundstage imaginable, without the necessity for a subwoofer.

Strada 2 is available in a second model variant known as the Strada 2 Centre. This version utilises an alternative horizontal tweeter arrangement, allowing use as a centre channel speaker in a surround sound setup.

STRADA 2



Strada 2 and Strada 2 Centre loudspeakers are supplied with your choice of either table stands or wall mounting brackets. Floor stands are available as an option.

SPECIFICATION

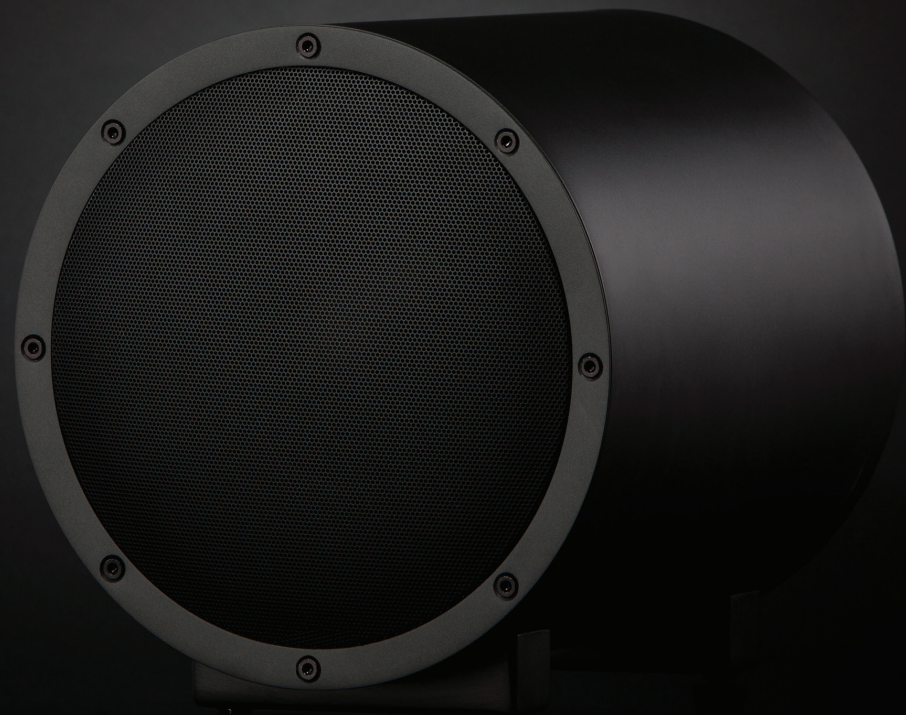
Frequency Response	68Hz to 20Khz +/- 3db (in room with boundary reinforcement, speakers within 1 foot of wall)
Impedance	8 Ohms nominal
Sensitivity	90 dB/1 Watt/1 meter
Power Handling	150 Watts RMS unclipped music power Minimum suggested power 10 Watts RMS
Tweeter	Patented CDT3 (Cylindrical Diaphragm Transducer) sporting 180° horizontal dispersion from 6kHz to above 20kHz
Woofers	Two 4" dynamic hyperbolic carbon fibre drivers optimised to integrate seamlessly with the CDT3 tweeter without the need for a crossover
Enclosure Type	Sealed with Auxiliary Bass Cavity Supplementation and Patented S2 loading
Dimensions	127mm (W) x 343mm (H) x 191mm (D)
Weight	5.2kg
Connections	5 way gold plated binding posts
Enclosure Material	Powder coated cast aluminium chassis with brushed stainless steel spheres and powder coated stainless steel grilles
Finish	Brushed stainless steel spheres with a black frame
Warranty	5 years parts and labour

STRADA 2 CENTRE, BLACK AND STAINLESS STEEL



STRADA 2

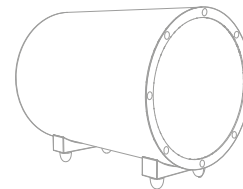
TR-3D IN MATT BLACK



TR-3D

Our TR-3D sub uses unique technology to offer coherent deep bass from very compact enclosures. And because the enclosure is cylindrical, it doesn't suffer from the resonances of conventional rectangular boxes.

At the heart of the TR-3D is a long-throw ceramic anodised aluminium cone driver, driven by a powerful 300 Watt Class-D digital amplifier. To make sure it performs to its potential in every room, bass equalisation options allow the user to adapt performance to room size. A small room probably won't require any boost, a large one might benefit from full boost.



Unusually, the TR-3D provides both high and low-level inputs to ensure maximum flexibility when configuring a system.

TR-3D

SPECIFICATION

In-room Frequency Response	18Hz to 180Hz +/- 3db
Digital Power Amp	300 Watts RMS, 600 Watts max.
Phase	0/180 switch
Low Pass	50 to 180Hz, continuously variable with LFE by-pass switch
High Pass	100Hz fixed, 1st order on high-level output
Enclosure type	Hardened steel with S2 Bass loading
Woofer	10" long throw ceramic coated aluminum
Bass EQ	0, +3dB, +6dB 25 Hz center frequency
Power	Auto/On/Off: toggle Switch
Connections	2 female RCA phono inputs and 2 female RCA phono outputs (pass-thru) 5-way gold plated binding posts
Dimensions	275mm (W) x 305mm (H) x 345mm (D)
Warranty	2 years parts and labour





**GALLO
ACOUSTICS**

THE INOX BUILDING
CALDWELLSIDE
LANARK
SCOTLAND
UNITED KINGDOM
ML11 7SR

GALLOACOUSTICS.COM