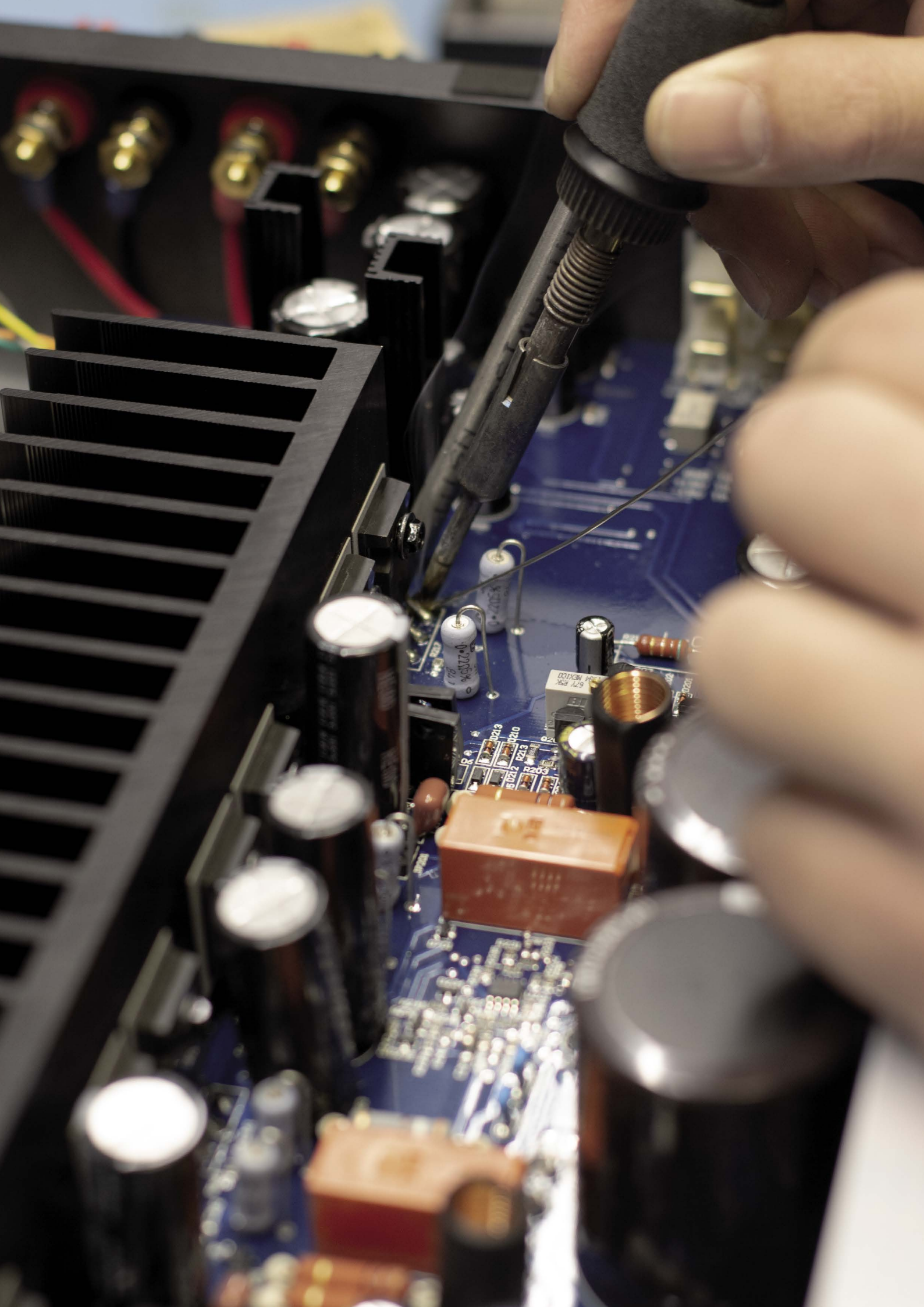




ROKSAN

Product Guide

Turntables and Vinyl | Audio Electronics



About Roksan

Roksan was founded in 1985 by Tufan Hashemi and Touraj Moghaddam, graduates of the University of London, Imperial College London and Queen Mary College. The name Roksan itself is derived from the name of Roxana, daughter of the Persian King Darius. This closely reflects the Persian heritage and roots of both Hashemi and Moghaddam. Not surprisingly many of Roksan's product names have references to names of cities, places and famous people of Persia.

Moghaddam, having then just obtained his PhD at Imperial College, became dissatisfied with the state of the audio arts when he heard his little TV set more musically satisfying than his already high-end (non Roksan) turntable/tri-amped audio system, and began experimentation. He deduced that where the existing turntable design failed was that the cartridge could not accurately follow the record groove. The mean line traced by the groove relative to the body of the cartridge needed to be constant. His ideas led him away from using the sprung sub-chassis as part of the suspension system. Moghaddam built a prototype using a fire door. Hashemi, a friend who had heard the radical new prototype turntable instantly wanted one. They teamed up to start the company.

The concept stunned the trade when it was demonstrated at the 1985 hi-fi show where the Xerxes Turntable was launched. Soon after, Roksan's expertise was poured into amplification and digital sources. These designs continue to set the standard for high-end music reproduction. Roksan also remain a true innovator and developer of high-end vinyl replay. The combination of innovation, sound quality and reliability has given Roksan an enviable reputation since day one.

Roksan is a member of



Contents

6 Turntables and Vinyl

8 Turntables

8 Xerxes 20 Plus Turntable

10 Radius 7 Turntable

13 Tonearms

13 NIMA Tonearm

14 Cartridges

14 Shiraz Cartridge

15 Corus2 Cartridge

16 Vinyl Electronics

16 Caspian RPM

17 Caspain RPP

18 Caspian VSC and VSC S2

19 XPS 7 Speed Controller

20 Turntable Accessories

22 Audio Electronics

24 blak Series

25 blak Integrated Amplifier

26 blak CD Player

28 Caspian M2 Series

29 Caspain M2 Integrated Amplifier

30 Caspain M2 Power Amplifier

31 Caspian M2 CD Player

32 K3 Series

33 K3 Integrated Amplifier

34 K3 Power Amplifier

35 K3 CD Player

36 Specifications



Turntables and Vinyl

From the inception of the company, vinyl replay has always been at the heart of Roksan. With the numerous other Roksan products in the vinyl replay range, we have maintained an enviable reputation for expertise in all things analogue including high-performance cartridges, tonearms, speed controls and pre-amps.



Xerxes 20 Plus Turntable

The Xerxes 20 Plus is the latest evolution of the revolutionary original Roksan Xerxes turntable.



The Xerxes 20 Plus Turntable is the result of ongoing research, development and refinement of the ideas behind the original Xerxes Turntable. The quality of engineering is visible through the compact clean lines and robust construction of the three-plinth, triple-layer isolation system.

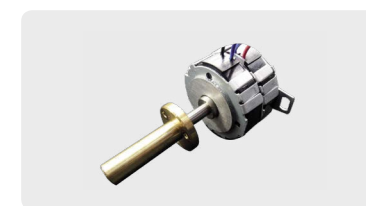
The Xerxes 20 Plus Turntable is best suited with Roksan tonearms, but is compatible with any other high-quality tonearms. It offers a powerful and expansive sound displaying a fine mid-band, fast deep bass and very smooth, open treble.

Musicians are firmly located within the soundstage, with the tempo and musicality combining to create a compelling sense of live music being played. If your quest is to extract the best from your vinyl collection, playing them on the Xerxes 20 Plus Turntable when fitted with an appropriate tonearm and cartridge is how best to achieve it.



Three-Level Plinth Decoupling

Three-Level Decoupling allows for accurate and smooth rotation with absolute minimal vibration.



Dedicated Motor Bearing

The motor is mounted on its own dedicated bearing, allowing for ultra smooth rotation.



Detachable Main Bearing Cap

A detachable main bearing cap isolates the record from the motor, reducing vibration further.

Available Finishes

☐ Gloss White ☒ Gloss Black ☐ Rosewood

Specifications on page 36

Radius 7 Turntable

A stunning combination of style and technology, the Radius 7 Turntable delivers the ultimate contemporary vinyl playing experience that takes aesthetic appeal, technical performance and musicality to a new level.



The Radius 7 Turntable's 20mm thick acrylic plinths have a 'glass-like' look that is not only visually stunning but contributes towards excellent sonic performance.

It uses an advanced motor assembly with electronic speed selection.

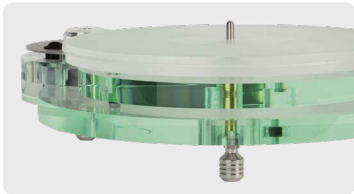
The motor and circuitry use Roksan's flagship technology. The high-quality crystal speed control system maintains pitch-perfect speed stability for both 33 and 45 RPM irrespective of voltage variations.

Radius 7 is available to purchase on its own or packaged with the NIMA Tonearm.



Universal Power Control

The advanced power control allows for accurate speed.



Low Resonance Build

Radius 7's acrylic construction reduces the amount of vibration.



Perfect with NIMA Tonearm

The Radius 7 Turntable can be purchased with or without the latest-generation NIMA Tonearm.

Available Finish

☐ Clear Acrylic

Available with or without NIMA Tonearm

Specifications on page 36

NIMA Tonearm

The precision engineered uni-pivot NIMA Tonearm has been designed to allow the full potential of Roksan cartridges to be realised when connected to Roksan or other high-quality turntables.



Combining aluminium alloy tubing, stainless steel and polished acrylic; this great value tonearm is made of ten individual precision machined components, which are hand assembled to produce a vast panoramic sound with a wealth of clarity, speed and punch.



Uni-pivot Tonearm

Ensures maximum detail is retrieved from vinyl.

Enduring Design

High quality build materials will stand the test of time.

Perfect Match

Matches Xerxes 20 Plus and Radius 7 Turntables in both style and performance.

The Corus2 Cartridge uses a built-in cover to protect your stylus when it's not being used. Learn more on page 15.

Use with a suitable high-end cartridge

Specifications on page 36

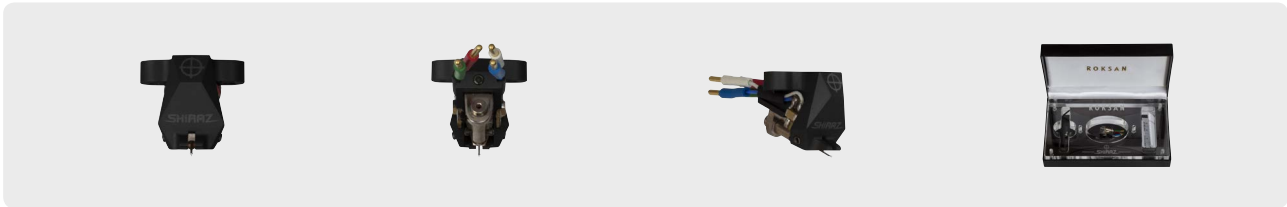
Shiraz Cartridge

An incredible cartridge that delivers pure musical enjoyment. Such performance has much to do with Roksan’s innovative mechanical and electrical design approaches inside and out.



Regarded as one of the finest sounding cartridges available, the Shiraz is Roksan’s ‘flagship’ design and is renowned for its detail, separation and refinement.

This moving coil design has a superior stylus profile, which we believe delivers the best sound quality and musical enjoyment.



Moving Coil Inside

For the finest possible sound quality.

Gyger II Super Fine Line Stylus

Offering excellent tracking ability with stunning detail retrieval and low surface noise.

Premium Display Case

Shiraz Cartridge is packaged in a high quality acrylic display case supplied with an individual plot.

Specifications on page 36

Corus2 Cartridge

The Corus2 cartridge introduces a fresh design and improvements throughout, elevating performance to a new level.



The revered Corus cartridge is now in its second generation, introducing ground breaking design changes and improvements throughout. It’s been developed to provide a wider appeal to audiophiles, whilst elevating performance to a new level.



Shibata Stylus Profile

Incredible detail retrieval and projection across its frequency range.

Moving Magnet

With twin magnets in V arrangement for improved channel separation.

Built-in Stylus Cover

A hinged stylus cover protects your stylus from accidental damage.

Specifications on page 37

Caspian RPM

The Caspian RPM is the external reference power supply to regulate the speed of a Xerxes Turntable. It uses a DS1.5 power supply module delivering the smoothest possible signal to the turntables' motor.



Featuring a super high-quality crystal speed control system and a DS1.5 power supply, it maintains pitch perfect speed stability for both 33 and 45 RPM. It is an upgrade in sound quality and accuracy over XPS 7 (see page 19).



LED Indicators

33 and 45 RPM speed options are indicated with coloured LEDs.

Easy Switching

Buttons on the front panel lets you easily switch between the two speeds.

Caspian Inspired

RPM has been designed to complement the Caspian M2 Series of electronics.

Available Finishes

☐ Silver ☒ Black

Only compatible with Xerxes Turntables

Specifications on page 37

Caspian RPP

The Caspian RPP (reference phono pre-amp) is a reference standard phono stage for moving magnet and moving coil cartridges, providing connection between a turntable and an amplifier.



The RPP phono pre-amp is the finest quality phono stage ever produced by Roksan. The highest possible quality components are used throughout the circuit to ensure the best possible performance.

The result is a very detailed and insightful performance, with bass presence and precise rhythmic speed along with upper frequency sweetness and a wide, deep soundstage.

Designed to visually match the Caspian M2 Series and sonically the Roksan Shiraz and Corus cartridges, with its versatile user adjustment options it is compatible with any specialist high-end audio system.



Highly Compatible

Compatible with both Moving Magnets and Moving Coil cartridge designs.

3 Switchable Gain Level

For added control and fine tuning.

Caspian Inspired

RPP has been designed to complement the Caspian M2 Series of electronics.

Available Finishes

☐ Silver ☒ Black

Compatible with most cartridges

Specifications on page 37

Caspian VSC and VSC S2

The VSC and VSC S2 combine the stability of the RPM speed control and the RPP reference phono stage in a one box solution. VSC uses one power module and VSC S2 uses two power modules.



For ultimate convenience and a fully comprehensive solution for getting the best performance from your Xerxes Turntable, the VSC and VSC S2 units combine both a RPM speed control and RPP phono stage in a single chassis.

The VSC powers the Xerxes Turntable, it has one single power supply for both RPM and RPP sections and the VSC S2 has two power supplies, one dedicated to each section.

(The VSC can be upgraded to VSC S2 specification as an after purchase option)



All-in-One Solution

One compact solution to power and control your Xerxes Turntable.

2 Power Supplies on VSC S2

The VSC S2 model features separate power supplies for speed control and pre-amp.

Caspian Inspired

VSC and VSC S2 has been designed to complement the Caspian M2 Series of electronics.

Available Finishes

- Silver
- Black

Only compatible with Xerxes Turntables

Specifications on page 37

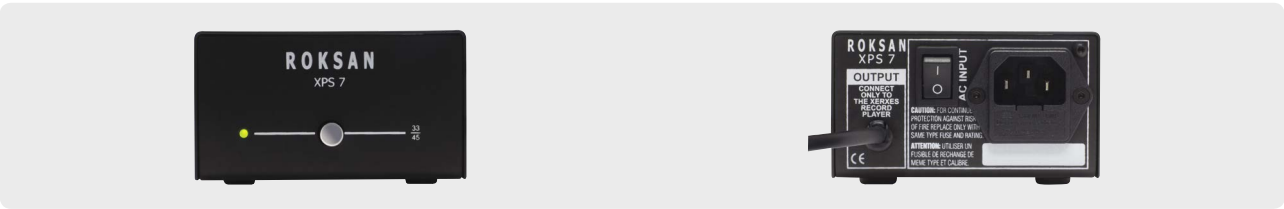
XPS 7 Speed Controller

The XPS 7 is the entry level speed control for a Xerxes Turntable. It is compact and economical way to enjoy our reference Xerxes 20 Plus turntable.



The XPS 7 supplies consistent and accurate control for the Xerxes Turntable and is electronically switchable between 33 and 45 RPM.

It is an ideal replacement and upgrade from previous XPS speed controls with an improvement in pitch and stability.



LED Indicator

A Bright LED light indicator shows different colours to represent speed.

Easy Switching

A button on the front panel lets you easily switch between the two speeds.

Small and Mighty

Our XPS 7 speed controller has been made to hide between the rest of your electronics.

Available Finish

- Black

Only compatible with Xerxes Turntables

Specifications on page 37

Turtable Accessories and Spares

Improve your Roksan analogue experience with our selection of high-quality turntable accessories and spares.

Turtable Cables



HDC Turntable Cables
Available in 1.5 m lengths



5 to 4 pin XPS Adaptor
Converts current speed controllers for use with the original Xerxes Turntable.

Turtable Drive Belts



Drive Belt for Xerxes Turntables
Replacement belt for any version of the Xerxes Turntable.



Drive Belt for Radius Turntables
Replacement belt for Radius 5 and Radius 7 Turntables.

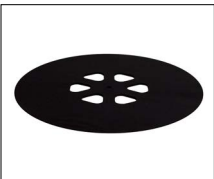
Turtable Upgrades



Xerxes Upgrade Blobs
Upgrades decoupling on the original Xerxes Turntable.



TMS Blobs
Upgrades decoupling on the TMS Turntable.



R-MAT Vinyl Support (4 mm or 7 mm)
Correctly supports vinyl records and couples it to the turntable.



Shim Kit (1 mm or 2 mm)
Raises main bearing housing on the original Xerxes Turntable.

Turtable Setup and Maintenance



Micro Fibre Record Cleaner
Two stage cleaning brush for vinyl records.



Spirit Level
Use to level of your turntable for the best performance.



Electronic Stylus Balance
For checking the optimum tracking force of your cartridge.



Tonearm Protractor
For setting the optimum position of the tonearm.



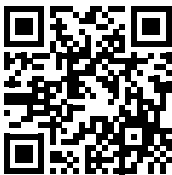
Turntable Main Bearing Oil Kit
High performance lubricant kit for all Roksan turntables.



Allen Key Kit
Replacement allen keys for installing components.



Cartridge Nut and Bolt Kit
Replacement nuts and bolts for turntable cartridges.



Scan the QR code to watch online set-up videos for Roksan products or visit vimeo.com/roksanaudio

The Roksan Two Stage Micro Fibre Record Cleaner provides optimum cleaning of your record's surface and groove.



Audio Electronics

Set your music free, no matter how you like to play it, with our range of audio electronics. Featuring the best audio components, technology and design, our range of amplifiers and CD players deliver refined audio with convenient connectivity.



blak Series

With its substantial build and striking visual design, coupled with an astounding performance of both power and delicacy, the blak Series offers the ultimate in musical involvement, audio engineering and user flexibility.



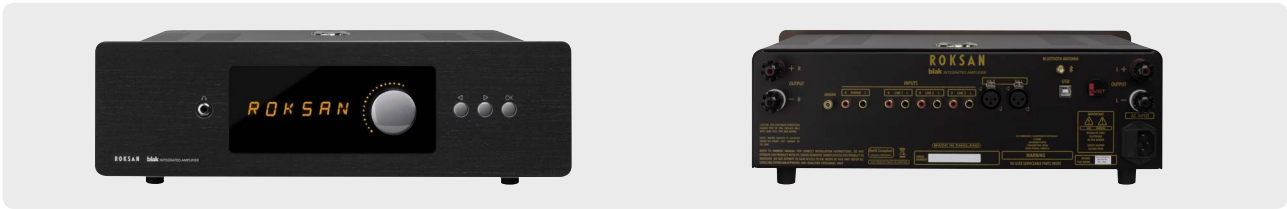
blak Integrated Amplifier

The award-winning blak Integrated Amplifier offers a large and impressive sound with controlled deep bass, detail, attack and a wide, deep soundstage. Aesthetically just as impressive, it offers a wide range of inputs including line-level, USB and aptX® Bluetooth.



The blak Integrated Amplifier is a powerful and musically enthralling design, with ample control and headroom available for exceptional grip and drive. Bass is quick, deep and exceptionally tight, ensuring a sense of speed and rhythm with an ultra spacious and detailed soundstage that benefits all recordings and musical genres.

Specially selected components feature throughout the fully symmetrical circuit and a top quality power supply design ensure the best possible performance.



All-in-one Entertainment

With aptX® Bluetooth, Moving Magnet, XLR, RCA inputs and USB.

Built-in DAC

Access the internal DAC (Digital to Analogue Converter) via a USB type-B port with your computer.

High Quality Streaming

Stream your entire music collection from your device via aptX® Bluetooth.

Available Finishes

- Charcoal
- Opium
- Anthracite

Specifications on page 38

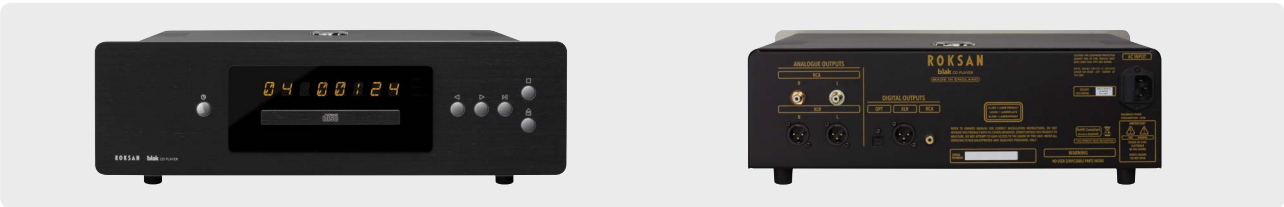
blak CD Player

The blak CD Player is a high end, refined-sounding product that offers exceptional CD replay in a robust and attractive design.



The blak CD Player is made for those who wish to extract the very best from their CD collection. It utilises the finest components available and a superior fully isolated CD drive. The result is one of the best looking and sounding CD players on the market offering spectacular high end sonic performance.

Micro detail and depth of soundstage with an exceptional warmth and musicality that communicates directly with the listener.



Audiophile Standard DAC

High quality chipset for optimum detail retrieval.

Isolated Mechanism

Eliminates vibration, improving data retrieval.

Large Track Display

With a simple button layout and dimmable display.

Available Finishes

- Charcoal
- Opium
- Anthracite

Specifications on page 38



Stream your music wirelessly from your computer, tablet or smartphone using the blak Integrated Amplifier's built-in aptX® Bluetooth.

Caspian M2 Series

The Caspian M2 series is Roksan's iconic range of multi-award-winning electronics. Regarded as one of the best value reference quality series available. It is perhaps the most recognised example of the affordable quality ethos that Roksan delivers to music lovers and audio enthusiasts.

Caspian M2 Integrated Amplifier

The Caspian M2 Integrated Amplifier features separate power supplies for pre and power amp sections and host of inputs and outputs. It is an award-winning audio classic that appeals to any discerning audiophile looking for a real taste of high-end sound.



The Caspian M2 Integrated Amplifier, like other products in the range, has received awards and accolades from around the world for its smooth, grippy and powerful sound. A true high end amplifier without the price tag, it is used as reference in multiple situations.

Using independent power supplies for the pre-amp and power amplifier sections with a fully symmetrical circuit design, offering excellent value for its performance level.

It can be used with the Caspian Power M2 Amplifier as part of a superior multi amplification system.



On Board Protection

Featuring a protection circuit and thermal control heat sink cooling.

Powerful Performance

With an independent pre-amplifier power supply.

Make The Connection

5 RCA inputs plus a tape input and output.

Available Finishes

- ☐ Silver
- ☒ Black

Specifications on page 38

Caspian M2 Power Amplifier

The Roksan Caspian M2 Power Amplifier is a superb addition to a Caspian M2 Integrated Amplifier to bi-amp suitable loudspeakers with its powerful and solid sound. It is also compatible with most pre-amplifiers to form a high-quality dedication pre and power amplifier combination.



The Caspian M2 Power Amplifier is a powerful and highly musical sounding design that is ideal for matching with the Caspian M2 Integrated Amplifier to form a bi-amp (or tri-amp) system, or as a standalone power amplifier combined with a pre-amplifier.

This gripping sounding amplifier delivers a powerful, smooth and musical sound that is consummately enjoyable, this power amplifier is a superb addition to any system.



Powerful and Complimentary

Add extra power to your Caspian M2 Integrated Amplifier.

Available Finishes

- ☐ Silver
- ☐ Black

Specifications on page 38

Caspian M2 CD Player

The Caspian M2 CD Player has separate digital and analogue power supplies, a fully isolated transport mechanism and is the superb sounding recipient of numerous awards worldwide.



The Caspian M2 CD Player has been the recipient of various industry awards over many years and is universally regarded as one of the best sounding players at its class. It is no surprise therefore to discover that it manages to enchant and impress with its smooth and lifelike reproduction of any genre of music.

It utilises a one-piece optimised motherboard, decoupled mechanism and dedicated transformer/power supplies for the analogue and digital domains. With this isolation and decoupling technology along with carefully selected components, it is a fine example of how CD still has plenty to offer in high quality audio reproduction.



High Quality Performance

With independent analogue output stage power supply.

Added Features

Featuring a programme facility and a track information display.

Choice of Outputs

Choose between analogue or digital outputs.

Available Finishes

- ☐ Silver
- ☐ Black

Specifications on page 39

K3 Series

Conceived to offer an affordable solution for the demands of music lovers in the current audio market. The K3 series comprises some of the finest sounding and most stylish audio products available. With Roksan's long experience in audio research and development, their meticulous approach to design using advanced technology, the K3 range of source players and amplification delivers useful features, superior build quality and excellent performance.

K3 Integrated Amplifier

Delivering impressive detail and powerful bass drive, the K3 Integrated Amplifier with Bluetooth and Moving Magnet phono input is a high quality solution for today's music lover.



The K3 Integrated Amplifier features a built-in moving magnet phono input, five line inputs make it a flexible hub for all manner of audio sources.

Additionally, aptX® Bluetooth technology allows music to be streamed from any Bluetooth enabled device for high quality, flawless wireless connectivity. A power output of 140 W (RMS) per channel (into 8 Ohms) and superb bass drive deliver a wide detailed sound stage for a truly engaging musical experience.

High quality components, boards and transformers are employed for optimum sound quality and reliability.



Powerful Performance

With up to 140 W per channel at 8 Ohms.

High Quality Streaming

Stream your entire music collection via aptX® Bluetooth.

Moving Magnet Input

Features a Moving Magnet phono input with 5 additional line inputs.

Available Finishes

- Charcoal
- Opium
- Anthracite

Specifications on page 39

K3 Power Amplifier

The K3 Power Amplifier is a high performance and powerful solution for taking your system to the next level.



An optimised power supply, a direct mains powered power amplifier section and other key design features ensure high performance and reliability. The 140 W (RMS) per channel (into 8 Ohms) K3 Power Amplifier offers a simple yet very effective route for upgrading the musical performance of your system.

With a smooth and solid sound, the K3 Power Amplifier can be used in combination with the K3 Integrated Amplifier to form a bi-amplified or even tri-amplified system (with compatible speaker systems) delivering the ultimate power and control to your loudspeakers.

Offering balanced XLR and single-ended RCA inputs and outputs, the K3 Power Amplifier will fit in with nearly all audio systems.



Symmetrical Layout

Optimised amplifier and power supply layout for the best performance.

Powerful Performance

With up to 140 W per channel at 8 Ohms.

RCA and XLR Inputs

Choice of RCA and XLR to fit with most audio systems.

Available Finishes

- Charcoal
- Opium
- Anthracite

Specifications on page 39

K3 CD Player

The K3 CD Player is a fully featured smooth and detailed performer that offers a peerless high-end experience.



The K3 CD Player is the latest of our many award winning CD players. It offers analogue and digital outputs as well as digital inputs. Specially selected components including an advanced precision crystal master clock and a high quality internal 24 bit/ 192 kHz Digital to Analogue conversion results in a smooth open sound full of detail.

Vocals are clean and lyrical, rhythms are solid and tight. The K3 CD Player delivers an involving musical performance ensuring maximum enjoyment from every disc played.



High Quality Playback

With advanced Digital to Analogue conversion.

Best Connection

Connect digital sources via Optical for analogue conversion.

Mix It Up

K3 CD Player features shuffle play with track information display.

Available Finishes

- Charcoal
- Opium
- Anthracite

Specifications on page 39

Specifications

Xerxes 20 Plus Turntable

Information on page 8

Main Bearing Spindle	Main Bearing Ball	Diameter	Main Bearing Housing	Inner Platter
Hardened tool steel	Super precision tungsten carbide	2 mm	Solid phosphor bronze	2 piece solid aluminium alloy interference fitted non-resonant
Outer Platter	Structure	Isolation	Motor	Pulley
2 piece solid aluminium alloy interference fitted non-resonant	3 plinth design	3 level decoupling	Custom made 24 pole synchronous	Solid aluminium alloy
Roundess and Concentricity				
3 plinth design				

Radius 7 Turntable

Information on page 10

Main Bearing Spindle	Main Bearing Housing	Main Bearing Ball	Pulley	Platter
Bespoke stainless steel	Precision machined solid brass	Custom case hardened steel	Custom-made aluminium alloy	Acrylic
Motor	Motor Drive	Speed	Power	Rumble
Custom made 24 pole synchronous	Employs 20 PPM crystal oscillator	33 and 45 RPM	90 - 240 V – 50 - 60 Hz	<-75 dB
Wow and Flutter	Dimensions (W x H x D)	Weight		
<0.04 %	400 x 150 x 350 mm	7 kg		

NIMA Tonearm

Information on page 13

Bearing	Arm Tube	Effective Length	Overhang	Distance from Record Centre
Stainless steel unipivot	Aluminium alloy	240 mm	17.5 mm	222.5 mm
Effective Mass	Arm Board Thickness	Recommended Cartridge Weight	Recommended Tracking Weight	Internal Wiring
10 g	7 - 25 mm (max.)	5 - 12 g	1.5 - 3.5 g	Van Den Hul cabling

Shiraz Cartridge

Information on page 14

Type	Output	Stylus	Cantilever	Tracking Weight
Moving coil	0.21 mV/cm/sec (RMS) 1.05 mV @ 5cm/sec recorded velocity	Recorded velocity super fineline Gyger II	Aluminium tube	2.2 - 2.5 g (2.4 g Recommended)
Cartridge Body	Generator Fixing	Cartridge Fixing	Recommended Load	Coil Impedance
Solid aluminium alloy	Unique 3 point rigid fixing	Standard 0.5 " centres (12.7 mm)	30 - 100 Ohms (100 Ohms recommended)	24 Ohms
Frequency Response	Channel Balance	Channel Separation	Weight	
15Hz - 30 kHz	Within 1dB	30 dB	8.2 g	

Corus2 Cartridge

Information on page 15

Type	Frequency Response	Output Voltage	Channel Separation	Output Balance
VM dual moving magnet	20 Hz to 27 kHz	3.5 mV (1 kHz, 5 cm/sec.)	25 dB (1 kHz)	<1.5 dB (1 kHz)
Tracking Weight	Coil Impedance	Vertical Tracking Angle	Recommended Load Impedance	Recommended Load Capacitance
1.8 to 2.2 g (2.0 g Recommended)	3.2 k Ohms (1 kHz)	23°	47 k Ohms	100 to 200 pF
Coil Inductance	Cantilever	Stylus	Cartridge Body	Weight
490 mH (1 kHz)	Aluminium tapered pipe	Nude Shibata	Aluminium	8.0 g

Caspian RPM

Information on page 16

Output Voltage	Phase	DC Offset	Harmonic Distortion	Output Impedance
16V rms (33 / 45 RPM)	0 degrees and 90 degrees	<10 mV	<0.1%	<0.1 Ohms

Caspian RPP

Information on page 17

Gain Settings	Signal to Noise Ratio	Harmonic Distortion	Output Impedance
MM: 40.6 dB @ 1 kHz MC1: 56 dB @ 1 kHz MC2: 65.5 dB @ 1 kHz	MM: >89 dB (ref. 5.0 mV) MC1: >79 dB (ref. 5.0 mV) MC2: >70 dB (ref. 5.0 mV)	<0.01 %	< 50 Ohms

Caspian VSC and VSC S2

Information on page 18

Specifications (RPM)

Output Voltage	Phase	DC Offset	Harmonic Distortion	Output Impedance
16V rms (33 and 45 RPM)	0 degrees and 90 degrees	<10 mV	<0.1 %	<0.1 Ohms

Specifications (RPP)

Gain Settings	Signal to Noise Ratio	Harmonic Distortion	Output Impedance
MM: 40.6 dB @ 1 kHz MC1: 56 dB @ 1 kHz MC2: 65.5 dB @ 1 kHz	MM: >89dB (ref. 5.0 mV) MC1: >79dB (ref. 5.0 mV) MC2: >70 dB (ref. 5.0 mV)	<0.01 %	< 50 Ohms

XPS 7

Information on page 19

Output Voltage	Phase	DC Offset	Harmonic Distortion	Output Impedance
16.5 Vac ±0.5 V ac rm s (33 RPM) 16.5 Vac ±0.5 V ac rm s (45 RPM)	90 degrees ±5 degrees	<50 mV	< 0.1 %	< 0.5 Ohms

blak Integrated Amplifier

Information on page 25

Inputs	Input Impedance	Outputs	Moving Magnet Input Gain	Gain
3 x RCA, XLR, USB type-B, MM phono, aptX Bluetooth	24 k Ohms XLR, 40 k Ohms RCA	Speaker (L & R), 1/4" headphone	76.75 dB @ 1 kHz , input impedance 47 k Ohms, 150pF	1 kHz, 8 Ohms 36,75 dB
Harmonic Distortion	Power Output (Per Channel)	Frequency Response	Channel Balance	Cross Talk
1 W, 8 Ohms, 5 kHz < 0.02 % / 12 W, 8 Ohm, 5 kHz <.035 %	1 kHz, 8 Ohms > 150 W 1 kHz, 4 Ohms > 230 W	-3 dB, 12 W, 8 Ohms from < 20 Hz to >80 kHz	1 kHz, 8 Ohms, 12 W > 0.3 dB	1 kHz, 8 Ohms < -104 dB
Signal-to-Noise Ratio	Dimensions (H x W x D)			
1 kHz, 8 Ohms, 1 W more than 76 dB	140 x 440 x 360 mm (Incl. faceplate)			

blak CD Player

Information on page 26

Operating System	Digital Outputs	Analogue Outputs	Peak Output	Harmonic Distortion
CD Digital Audio System (CD, CD-R, CD-RW)	Optical, RCA, XLR	Stereo RCA, Stereo XLR	4.4 V	1 kHz, 0 dB less than 0.001 %
Linearity	Jitter	Signal-to-Noise Ratio	Stop Band Rejection	Dimensions (H x W x D)
1 kHz > 89 dB	Less than 135 ps	> 108 dB	>100 dB	140 x 440 x 320 mm (Incl. faceplate)

Caspian M2 Integrated Amplifier

Information on page 29

Inputs	Input Impedance	Outputs	Power Output (Per Channel)	Power Supply
5 x RCA (CD Input Switchable to gold-plated XLR)	47 Ohms	Speaker (L & R), Gold-plated RCA Pre-amp, Gold-plated RCA tape	> 85 W (8 Ohms) / > 125 W (4 Ohms)	350 VA Power Amplifier 60 V A Ultra low noise Toroidal transformer Pre-amp section toroidal
Frequency Response	Gain	Harmonic Distortion	Power Consumption	Signal-to-Noise Ratio
-3 dB, <1 Hz – 90 kHz	40 dB overall	0.002 % 1 kHz, 0.015 % 20 kHz 10 W - 8 Ohms 0.0025 % 1 kHz, 0.03 % 20 kHz 50 W - 8 Ohms	Full Power 2-CH: 8 Ohms = <330 W, 4 Ohms = <550 W	Line 108 dB
Dimensions (W x H x D)	Weight			
432 x 80 x 330 mm (Incl. feet)	14 kg			

Caspian M2 Power Amplifier

Information on page 30

Inputs	Input Impedance	Input Sensitivity	Output	Power Output (Per Channel)
RCA, XLR	38 k Ohms	240 mV rms	Speakers (L & R), RCA, XLR	> 85 W (8 Ohms) > 125 W (4 Ohms)
Power Supply	Frequency Response	Gain	Harmonic Distortion	Signal-to-Noise Ratio
350 VA Power Amplifier 60 V A Ultra low noise Toroidal transformer Pre-amp section toroidal	-3 dB, <3 Hz - >100 kHz	31.6 dB	<0.005 % 1 kHz - 8 Ohms	100 dB (ref. 900 mV)
Power Source	Power Consumption	Dimensions (W x H x D)	Weight	
220 V – 240 V – 50 Hz / 60 Hz 100 V – 120 V – 50 Hz / 60 Hz	Standby: 5 W Full power / 2 channels: 8 Ohms = <330 W / 4 Ohms = <550 W	432 x 80 x 330 mm (incl. feet)	14 kg	

Caspian M2 CD Player

Information on page 31

Operating System	Frequency Response	Harmonic Distortion	Intermodulation Distortion	Signal-to-Noise Ratio
CD Digital Audio System (CD, CD-R, CD-RW)	20 Hz - 20 kHz ± 0.2 dB	<0.0015 % @ 0 dB, 1 kHz (typically 0.0005 %) <0.005 % @ -30 dB, 1 kHz <0.01 % @ 0 dB, 20 kHz	< 0.001 % @ 0 dB (typically 0.0005 %)	105 dB (L & R)
Wow and Flutter	Channel Separation	Output Voltage	Digital Outputs	D/A Conversion
Quartz precision	>100 dB @ 1 kHz / >100 dB @ 20 kHz	2.2 V rms	RCA (75 Ohms), Optical, XLR (110 Ohms)	PCM1730E Advance segment
Resolution / Sampling	Oscillation	Crystal	Jitter	Idle Pattern
24 bits / 192 kHz	3rd overtone oscillation	Super precision, custom made	< 130 psec	<-105 dB (L & R)
Stop-Band Rejection	Power Supply	Power Consumption	Dimensions (W x H x D)	Weight
<-95 dB	Toroidal transformer 12 fully regulated power rails	< 20 W	432 x 80 x 330 mm (Incl. feet)	10 kg

K3 Integrated Amplifier

Information on page 33

Input	Input Impedance	Line Input Sensitivity	Outputs	Power Output (Per Channel)
5 x RCA, MM phono, aptX Bluetooth, Bypass	47 k Ohms	440 mV @ 140 W / 8 Ohms	Speaker (L & R), pre-amp, 3.5 mm headphone	> 140 W (8 Ohms) / > 220 W (4 Ohms)
Power Supply	Frequency Response	Gain	Harmonic Distortion	Power Consumption
550 VA Toroidal transformer	<3 Hz - >100 kHz (-3 dB)	37.5 dB (75x)	<0.005 % (1 kHz - 14 W @ 8 Ohms)	Full Power 2-CH: 8 Ohms =<330 W 4 Ohms =<550 W
Signal-to-Noise Ratio	Dimensions (W x H x D)	Weight		
>90 dB (Line input)	432 x 102 x 380 mm	14 kg		

K3 Power Amplifier

Information on page 34

Input	Input Impedance	Input Sensitivity	Outputs	Power Output (Per Channel)
RCA, XLR	23 k Ohms	(115 W) - 900 mV	Speaker (L & R)	> 140 W (8 Ohms) / > 220 W (4 Ohms)
Power Supply	Damping Factor	Frequency Response	Gain	Harmonic Distortion
500 VA Ultra low noise toroidal transformer	>110 (8 Ohms)	<3 Hz - >100 kHz (-3 dB)	31.6 dB	<0.003 % 1 kHz - 8 Ohms
Power Consumption	Signal-to-Noise Ratio	Dimensions (W x H x D)	Weight	
Warm up mode <25 W, Full Power <800 W	100 dB (ref. 900 mV)	432 x 105 x 380 mm	14 kg	

K3 CD Player

Information on page 35

Operating System	Inputs	Outputs	Output Voltage	Frequency Response
CD Digital Audio System (CD, CD-R, CD-RW)	RCA (75 Ohms), Optical	RCA (75 Ohms), XLR (110 Ohms), Optical	2.2 V rms	20 Hz - 20 kHz (± 0.2 dB)
Harmonic Distortion		Signal-to-Noise Ratio	Wow & Flutter	Channel Separation
< 0.002 % @ 0 dB, 1 kHz, < 0.006 % @ -30 dB,1 kHz,	< 0.002 % @ 0 dB, 20 Hz, < 0.008 % @ 0 dB, 20 kHz	< 96 dB (L & R)	Quartz Precision	100 dB @ 1kHz / 80 dB @ 20 kHz
D/A Conversion	Resolution/Sampling	Oscillation	Crystal	Jitter
PCM1730E advance segment	24 bits / 192 kHz	3rd overtone oscillation	Super precision, custom made	< 150 psec
Idle Pattern	Stop-Band Rejection	Power Supply	Dimensions (W x H x D)	Weight
< -107 dB L&R	< -98 dB	Toroidal transformer, 7 fully regulated power rails	432 x 105 x 380 mm	9 kg

**Roksan**

24 Brook Road, Rayleigh
Essex, SS6 7XJ, UK
+44 (0)1268 740 580
info@roksan.com

roksan.com



Read me, keep me
or recycle me

© Monitor Audio Ltd t/a Roksan

V3.0 12/18